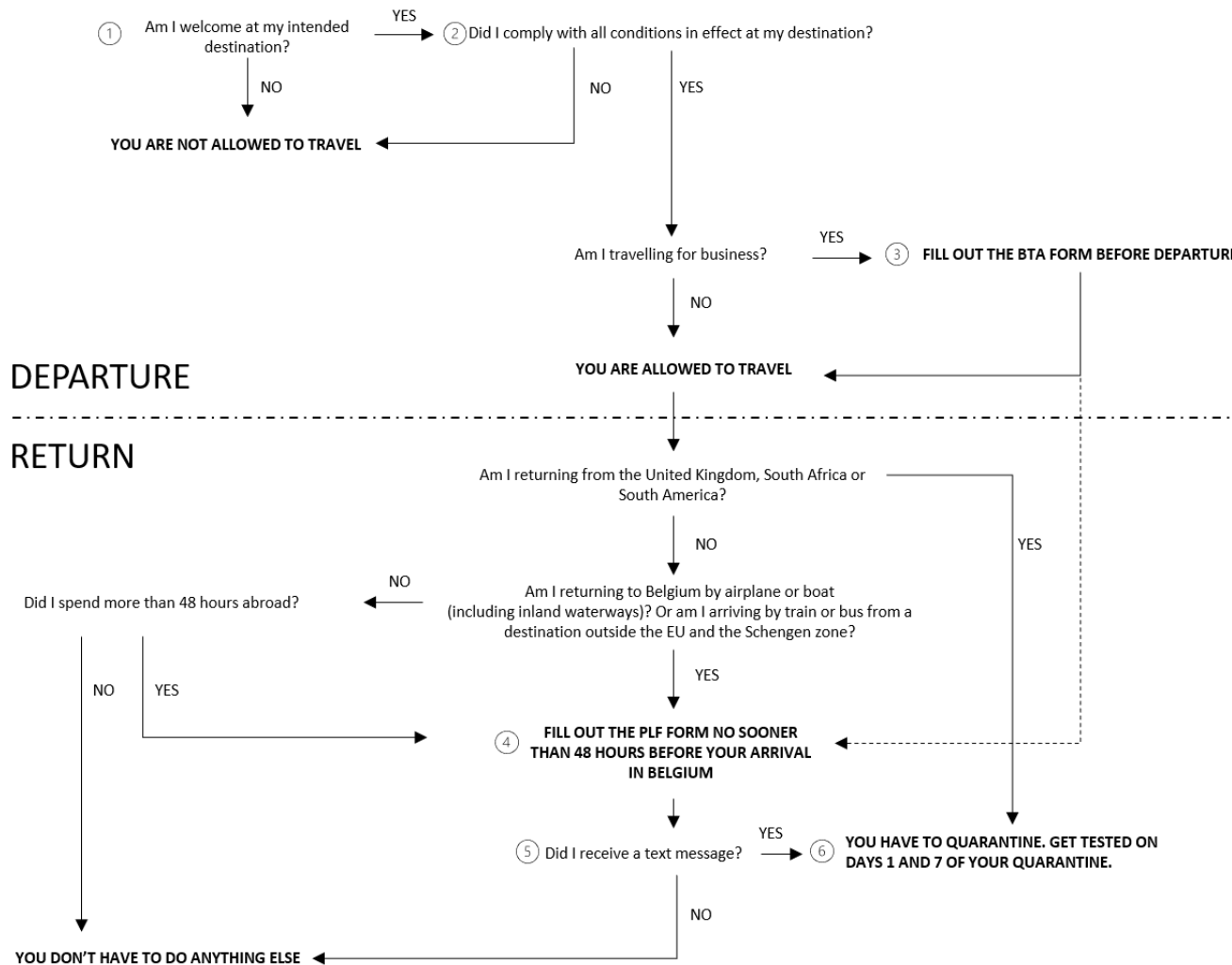


# Step-by-step plan for your next (business) trip



## ADDITIONAL INFORMATION

- ① Check the travel advice at <https://diplomatie.belgium.be/>
- ② check the travel advice at <https://diplomatie.belgium.be/>  
Some destinations require a negative PCR test result no more than 72 hours before travel
- ③ More details on <https://bta.belgium.be/>  
The certificate number you will thus obtain can be filled in later on the Passenger Locator Form (if necessary). This reduces the odds of you having to quarantine, even if returning from a red zone. This exception only applies to business travel.
- ④ You can fill out the Passenger Locator Form (PLF) here: <https://travel.info-coronavirus.be/public-health-passenger-locator-form>
- ⑤ Are you returning from a red zone? You are almost certain to receive a text message. The odds are smaller in case of a business trip where you used a BTA certificate number (see ③) Click here for information on the colour codes per country <https://www.info-coronavirus.be/en/colour-codes-by-country/>
- ⑥ More details on quarantine <https://www.info-coronavirus.be/en/quarantine-isolation/>  
More details on testing <https://www.info-coronavirus.be/en/testing/>  
More details on exceptions to quarantine and testing <https://www.info-coronavirus.be/nl/uitzonderingen/>

© UniglobeTravel

*This chart only applies to travellers with a main residence in Belgium. No rights can be derived from this chart. For all up-to-date info please consult the official sources of the Belgian government such as [info-coronavirus.be](https://www.info-coronavirus.be) and [diplomatie.belgium.be](https://diplomatie.belgium.be)*